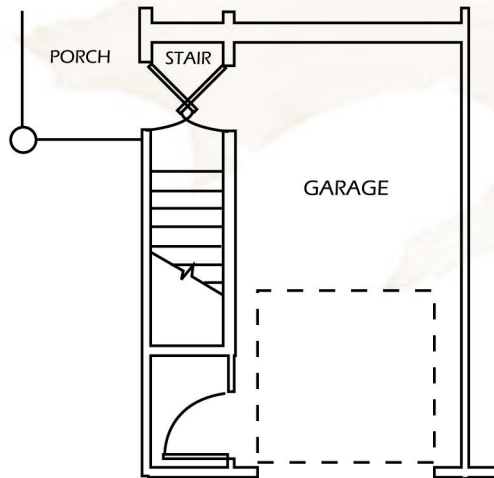
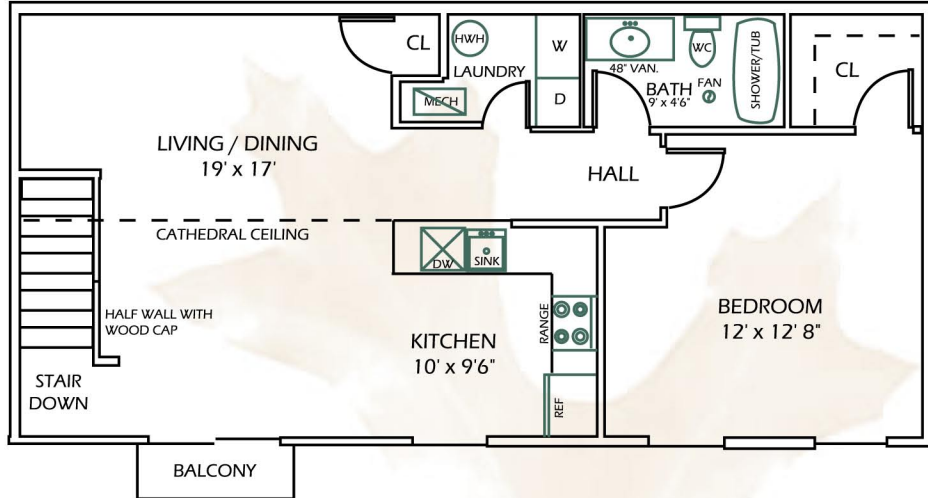


The Partridge

\$



UNIT F

882 sq. ft. Living Space
 245 sq. ft. Garage
 55 sq. ft. Balcony & Porch
 1182 Total sq. ft.

** All Rent Includes: Local and Long Distance Phone Service, High Speed Wireless Internet, and DirecTV. No Waiting or Hook-up Fees!

All Room Sizes Are Approximate.

*** East Greenbush School District