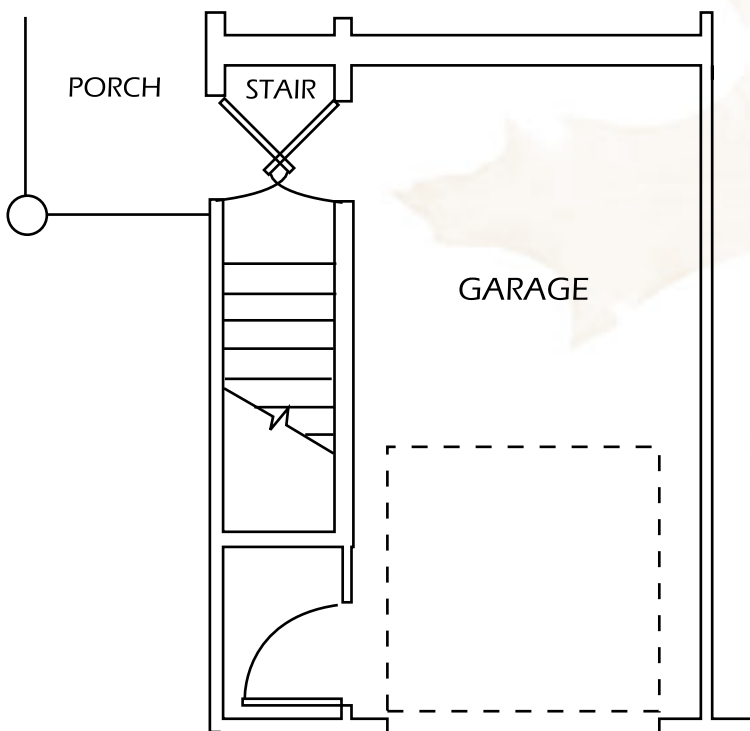
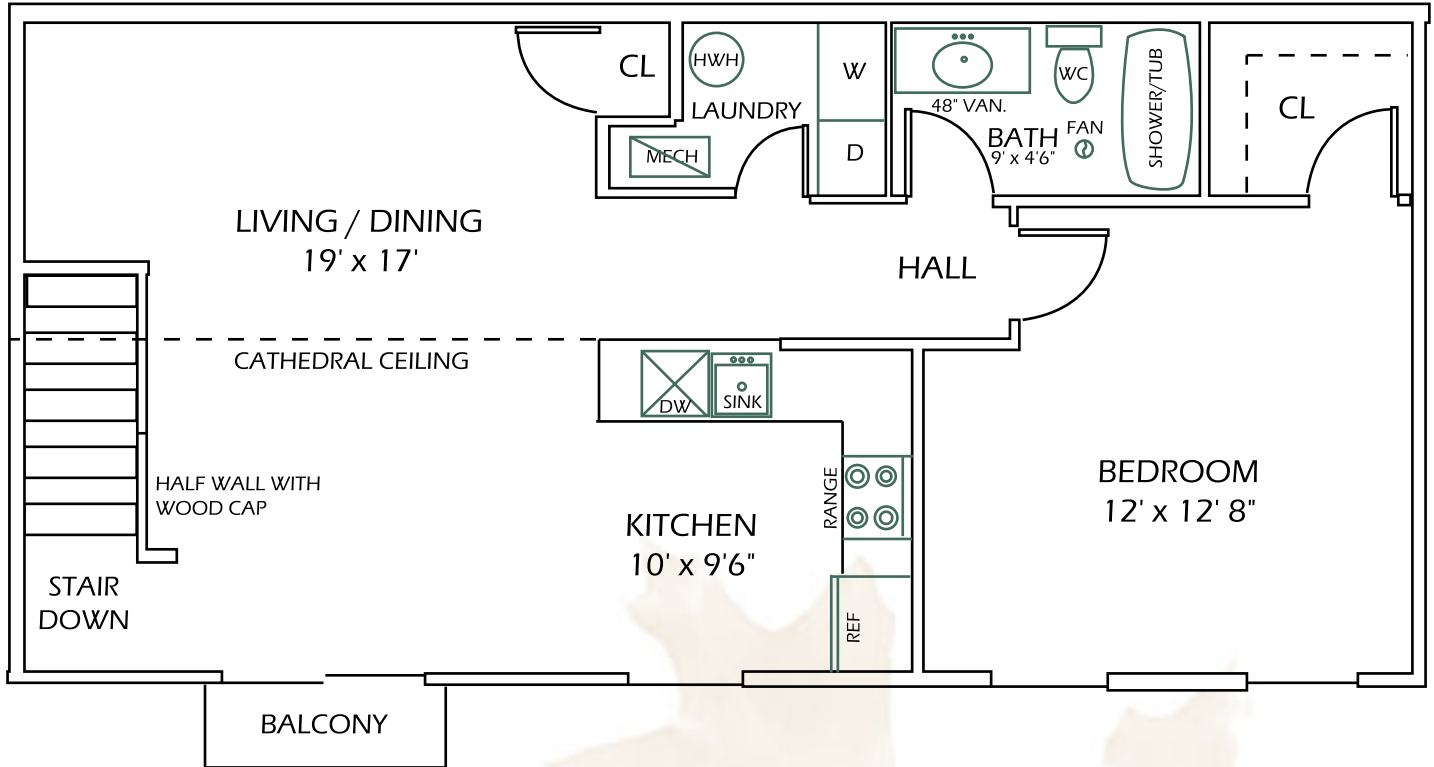


# The Partridge

\$



## UNIT F

882 sq. ft. Living Space  
245 sq. ft. Garage  
55 sq. ft. Balcony & Porch  
1182 Total sq. ft.

\*\* All Rent Includes: Local and Long Distance Phone Service, High Speed Wireless Internet, & Cable TV with HBO. No waiting or hook-up fees!

All room sizes are approximate.

\*\*\* East Greenbush School District